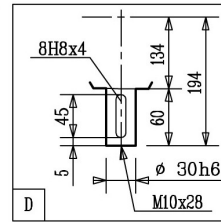
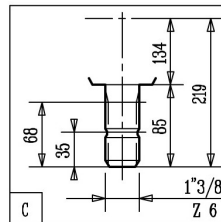
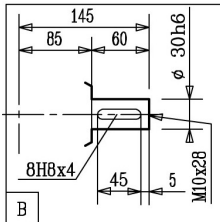
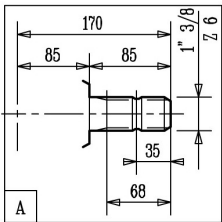


kg 14

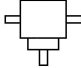
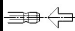



LT. 0,9
SAE.90EP

Shaft Profiles - Tipi di Albero



Tecnical Data - Dati Tecnici

i	r.p.m.	HP	kW	daNm	InLbs	X	Y	Z					L				
									1	2	-	-		-	0		Z
1 : 1	540	23	16,9	29	2568	-	B	C	1	2	-	-	-	0	Z	-	259.030
1 : 1	540	23	16,9	29	2568	B	-	C	3	4	-	-	-	0	Z	-	259.031
1 : 1	540	23	16,9	29	2568	B	B	C	5	6	-	-	-	0	Z	-	259.032
1 : 1,46	540	20	14,7	17	1532	A	-	D	21	22	-	-	-	0	X	-	259.914
1 : 1,46	540	20	14,7	17	1532	A	-	D	23	24	-	-	-	0	X	-	259.915
1 : 1,84	540	17	12,5	12	1027	B	-	C	29	30	-	-	-	0	Z	-	259.916
1 : 1,84	540	17	12,5	12	1027	-	B	C	31	32	-	-	-	0	Z	-	259.917
1 : 1,84	540	17	12,5	12	1027	B	B	C	33	34	-	-	-	0	Z	-	259.918
1 : 2,91	540	10,5	7,7	6	540	A	-	D	23	24	-	-	-	0	X	-	259.306
1 : 2,91	540	10,5	7,7	6	540	A	-	D	21	22	-	-	-	0	X	-	259.925
1,46 : 1	540	16	11,8	29	2604	B	B	C	5	6	-	-	-	0	Z	-	259.010
1,46 : 1	540	16	11,8	29	2604	-	B	C	1	2	-	-	-	0	Z	-	259.033
1,46 : 1	540	16	11,8	29	2604	B	-	C	3	4	-	-	-	0	Z	-	259.034
1,84 : 1	540	12	8,8	28	2462	-	B	C	1	2	-	-	-	0	Z	-	259.035
1,84 : 1	540	12	8,8	28	2462	B	-	C	3	4	-	-	-	0	Z	-	259.036
1,84 : 1	540	12	8,8	28	2462	B	B	C	5	6	-	-	-	0	Z	-	259.037